

FOLIO N°

Technical drawing of a circular floor plan for a room, showing concentric circles, ventilation holes, and a central relief area.

**Dimensions:**

- Overall diameter:  $\phi 0.650$
- Inner circle diameter:  $\phi 0.580$
- Inner circle diameter:  $\phi 0.430$
- Top and bottom flange thickness:  $0.50$

**Internal Features:**

- ORIFICIOS PARA VENTILACION  $\phi 0.03m$ .** (Ventilation holes,  $\phi 0.03m$ )
- SIGLA BAJO RELIEVE** (Relief marks)
- Central Area:** A central square area with a dashed line, labeled **M** and **R**.
- Top and Bottom Features:** Labeled **B** (top) and **C** (bottom).

**Dimensions of Internal Features:**

- Top and bottom flange thickness:  $0.04$
- Top and bottom flange width:  $0.125$
- Top and bottom flange height:  $0.140$
- Top and bottom flange width:  $0.125$
- Top and bottom flange height:  $0.125$
- Top and bottom flange width:  $0.140$
- Top and bottom flange height:  $0.125$
- Top and bottom flange width:  $0.025$

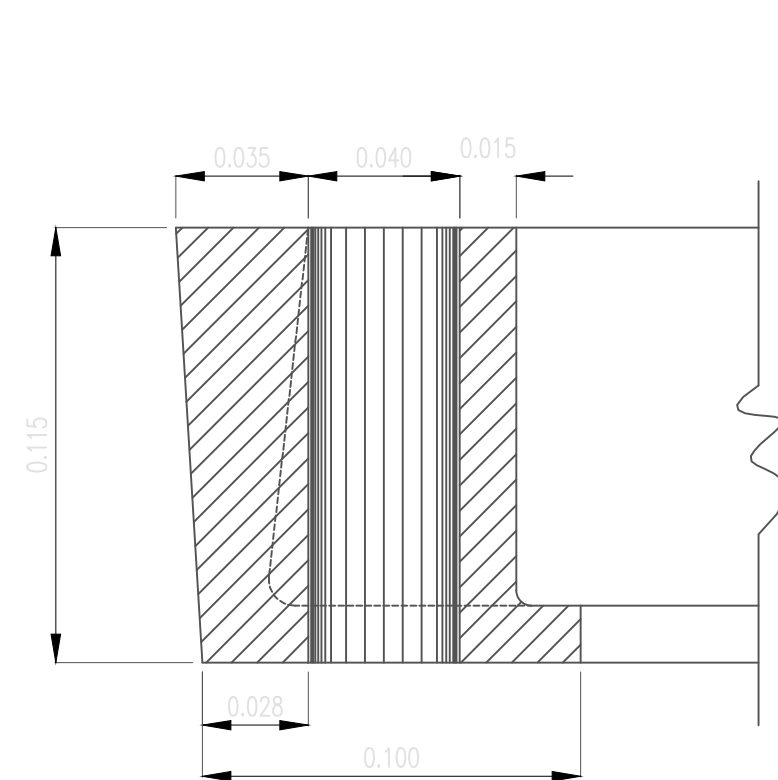
Technical drawing of a rectangular reinforced concrete slab, labeled "ESCALA: 1:50". The drawing shows a cross-section of the slab with various dimensions and reinforcement details.

**Dimensions:**

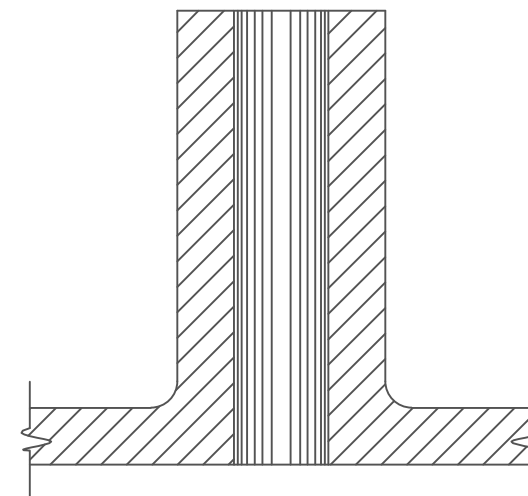
- Overall width: 0.710
- Internal width: 0.650
- Overall height: 0.115
- Height of the top reinforcement layer: 0.025
- Height of the bottom reinforcement layer: 0.025
- Width of the side supports: 0.080
- Width of the central reinforcement area: 0.600
- Overall length: 0.640
- Width of the end supports: 0.020

**Reinforcement Details:**

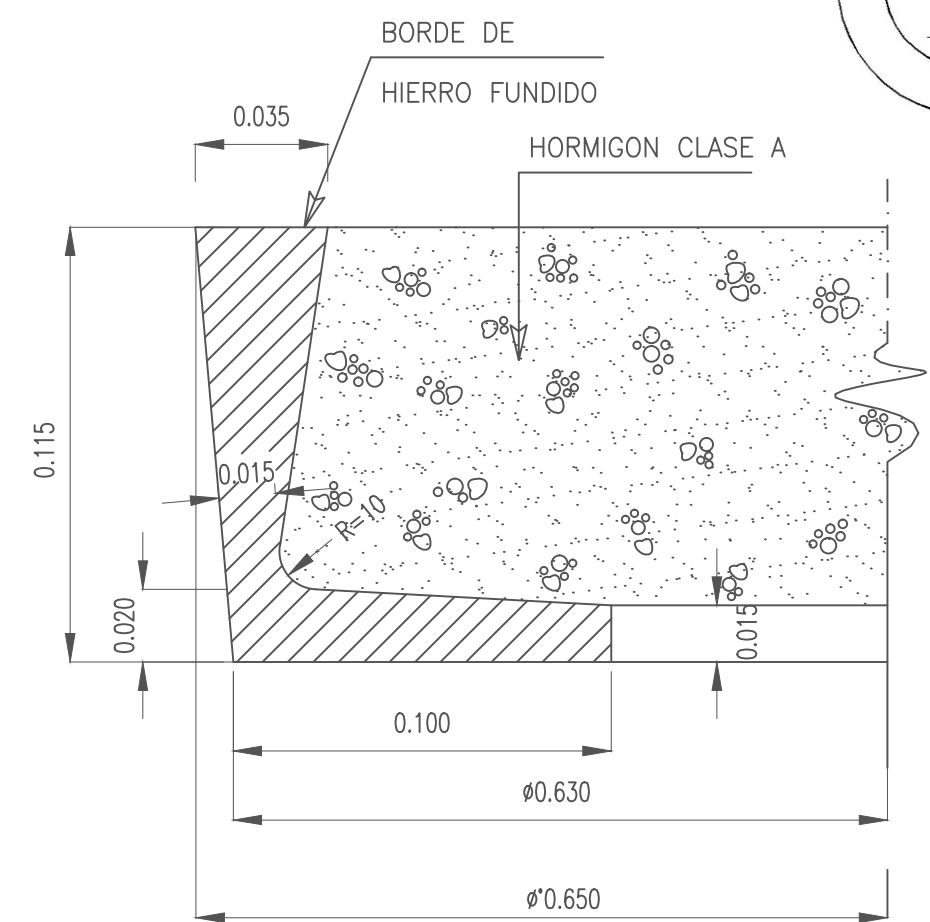
- ARO  $\phi 4.2$ :** Top reinforcement bars.
- ARO  $\phi 10$ :** Bottom reinforcement bars.
- MALLA  $\phi 4.2$  C/0.070:** Top mesh reinforcement.
- MALLA  $\phi 10$  C/0.070:** Bottom mesh reinforcement.
- ORIFICIOS DE VENTILACION  $\phi 0.03m$ :** Ventilation holes.
- HORMIGON TIPO A:** Concrete type A.
- REVESTIMIENTO CON RESINA EPOXI:** Epoxy resin coating.
- MARCO DE HIERRO FUNDIDO:** Cast iron frame.



ESCALA: 1: 25




*ESCALA: 1: 25*



*ESCALA: 1: 25*

<i>HORMIGON</i> <i>CLASE</i>	<i>MINIMO CONTENIDO</i> <i>UNITARIO DE</i> <i>CEMENTO (kg/m3)</i>	<i>RESISTENCIA CARACTERISTICA</i> <i>MINIMA A COMPRESION DE</i> <i>PROBETAS CILINDRICAS (kg/cm2)</i>
<i>A</i>	<i>400</i>	<i>300</i>

ANTECEDENTE PLANO 36459 E O.S.N.

 <p>Municipalidad de Rosario Secretaría de Obras Públicas</p> <p>Dirección General de Hidráulica</p> <p>Dirección de Proyectos de Hidráulica</p>	Obra: <i>MARCO Y TAPA PARA CAMARAS VARIAS</i>			Plano N°: <i>MR-D-01</i>
				Revisión:
				Fecha: (1980) JULIO 2011
				Escala: VARIAS
				Distrito:
Relevamiento:	Proyecto:	Dibujo:	Visado:	
		TEC. RAQUEL MASI		